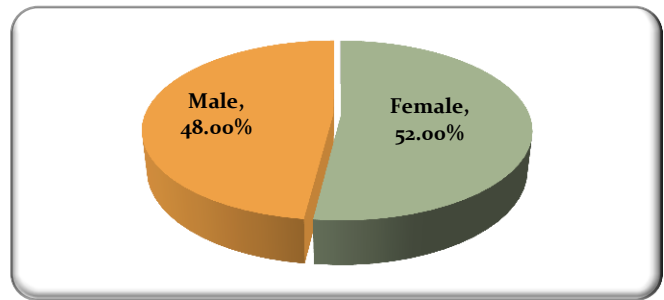


SPCC Cycling Questionnaire Autumn 2011

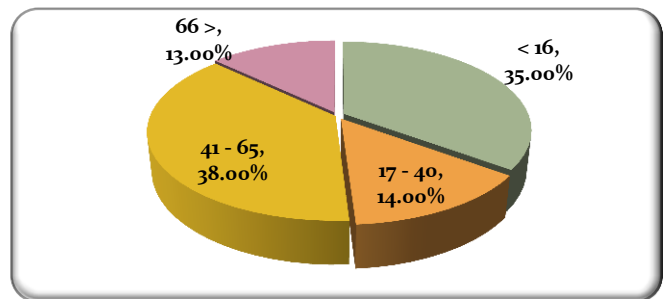
1. Are You?

Gender	Percentage
Female	52.00%
Male	48.00%



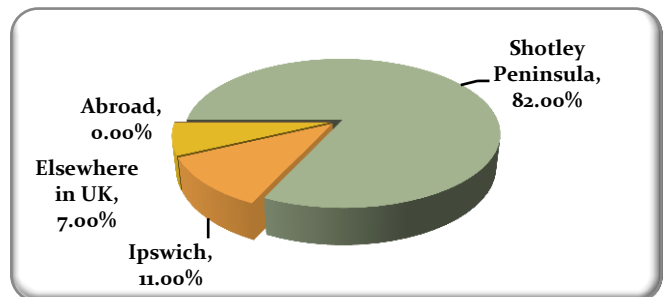
2. Which age group do you belong to?

Age	Percentage
< 16	35.00%
17 - 40	14.00%
41 - 65	38.00%
66 >	13.00%



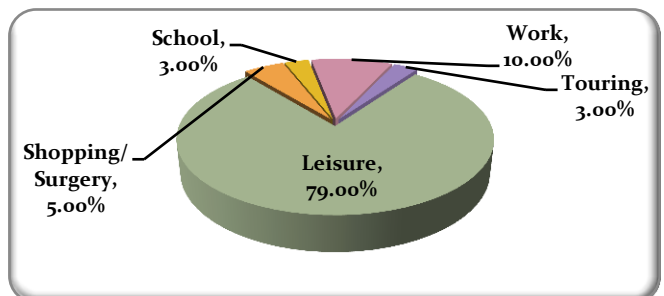
3. Where do you currently live?

Area	Percentage
Shotley Peninsula	82.00%
Ipswich	11.00%
Elsewhere in UK	7.00%
Abroad	0.00%



4. What is your main reason for cycling?

Reasons	Percentage
Leisure	79.00%
Shopping/Surgery	5.00%
School	3.00%
Work	10.00%
Touring	3.00%

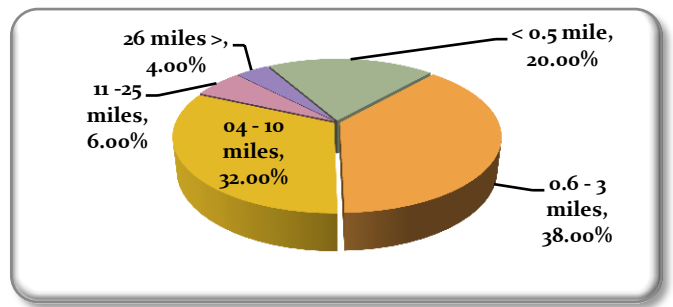


SPCC Cycling Questionnaire Autumn 2011

5a. How far do you/would you normally cycle in one outing?

NOW

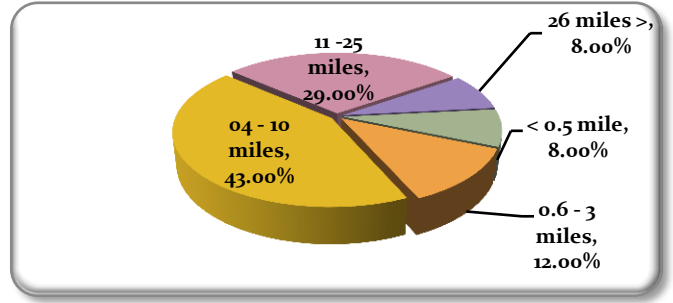
Distance	Percentage
< 0.5 mile	20.00%
0.6 - 3 miles	38.00%
04 - 10 miles	32.00%
11 -25 miles	6.00%
26 miles >	4.00%



5b.

WITH NEW PATH

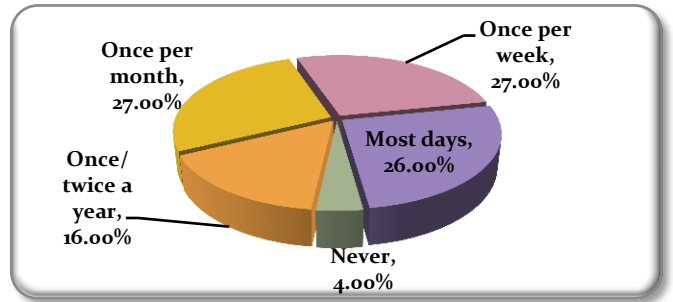
Distance	Percentage
< 0.5 mile	8.00%
0.6 - 3 miles	12.00%
04 - 10 miles	43.00%
11 -25 miles	29.00%
26 miles >	8.00%



6a. How often do you/would you use your bicycle?

NOW

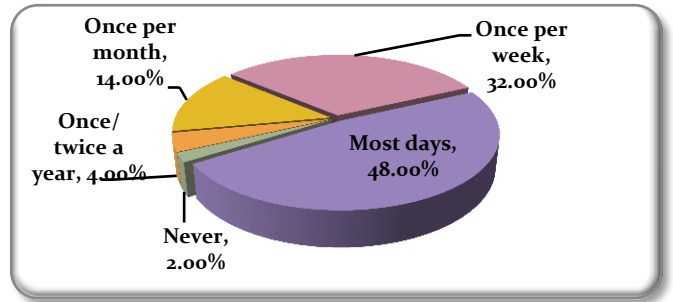
Frequency	Percentage
Never	4.00%
Once/twice a year	16.00%
Once per month	27.00%
Once per week	27.00%
Most days	26.00%



6b.

WITH NEW PATH

Frequency	Percentage
Never	2.00%
Once/twice a year	4.00%
Once per month	14.00%
Once per week	32.00%
Most days	48.00%

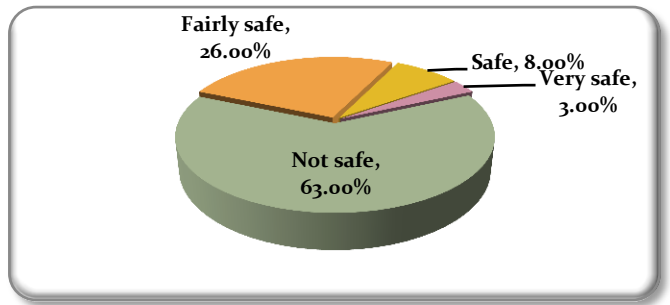


SPCC Cycling Questionnaire Autumn 2011

7a. How safe do you feel about cycling on the Shotley Peninsula?

ON B1456 NOW

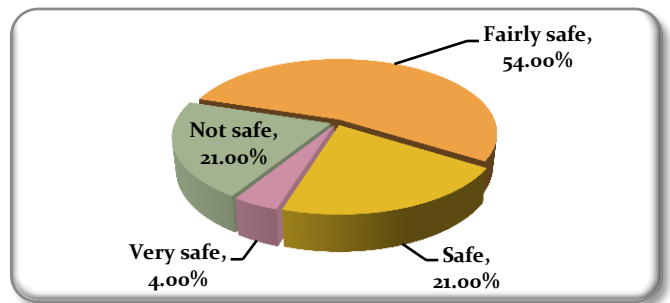
Safety	Percentage
Not safe	63.00%
Fairly safe	26.00%
Safe	8.00%
Very safe	3.00%



7b.

ON OTHER ROADS NOW

Safety	Percentage
Not safe	21.00%
Fairly safe	54.00%
Safe	21.00%
Very safe	4.00%



7c.

ON NEW PATH IN FUTURE

Safety	Percentage
Not safe	1.00%
Fairly safe	8.00%
Safe	36.00%
Very safe	55.00%

